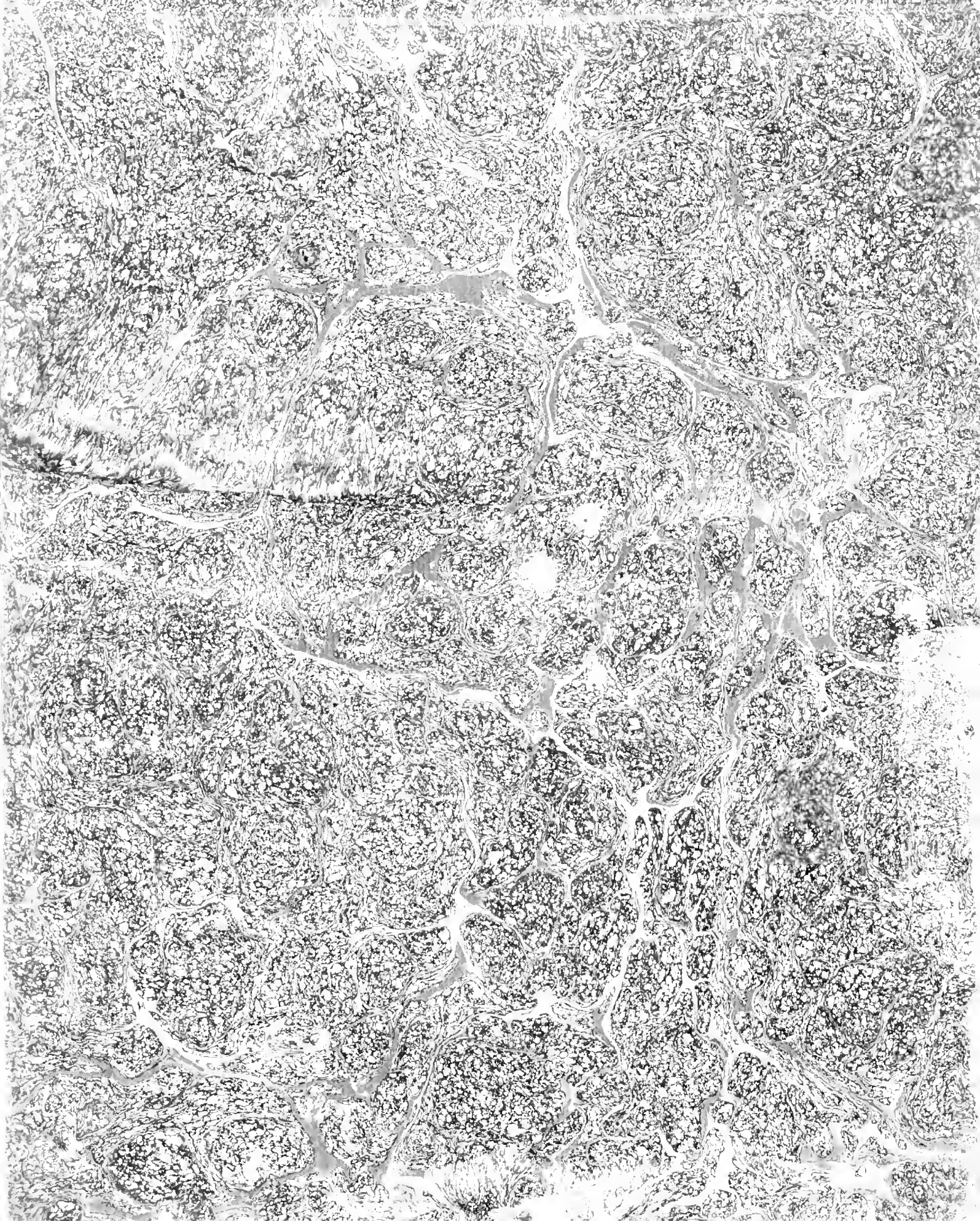




7 7412 000010216





2754

796





1875

Entered at Stationers Hall.

DESCRIPTION

OF A

RARE SCARABÆUS

FROM

POTOSI, IN SOUTH AMERICA;

WITH

ENGRAVED REPRESENTATIONS OF THE SAME,

COLOURED FROM NATURE.

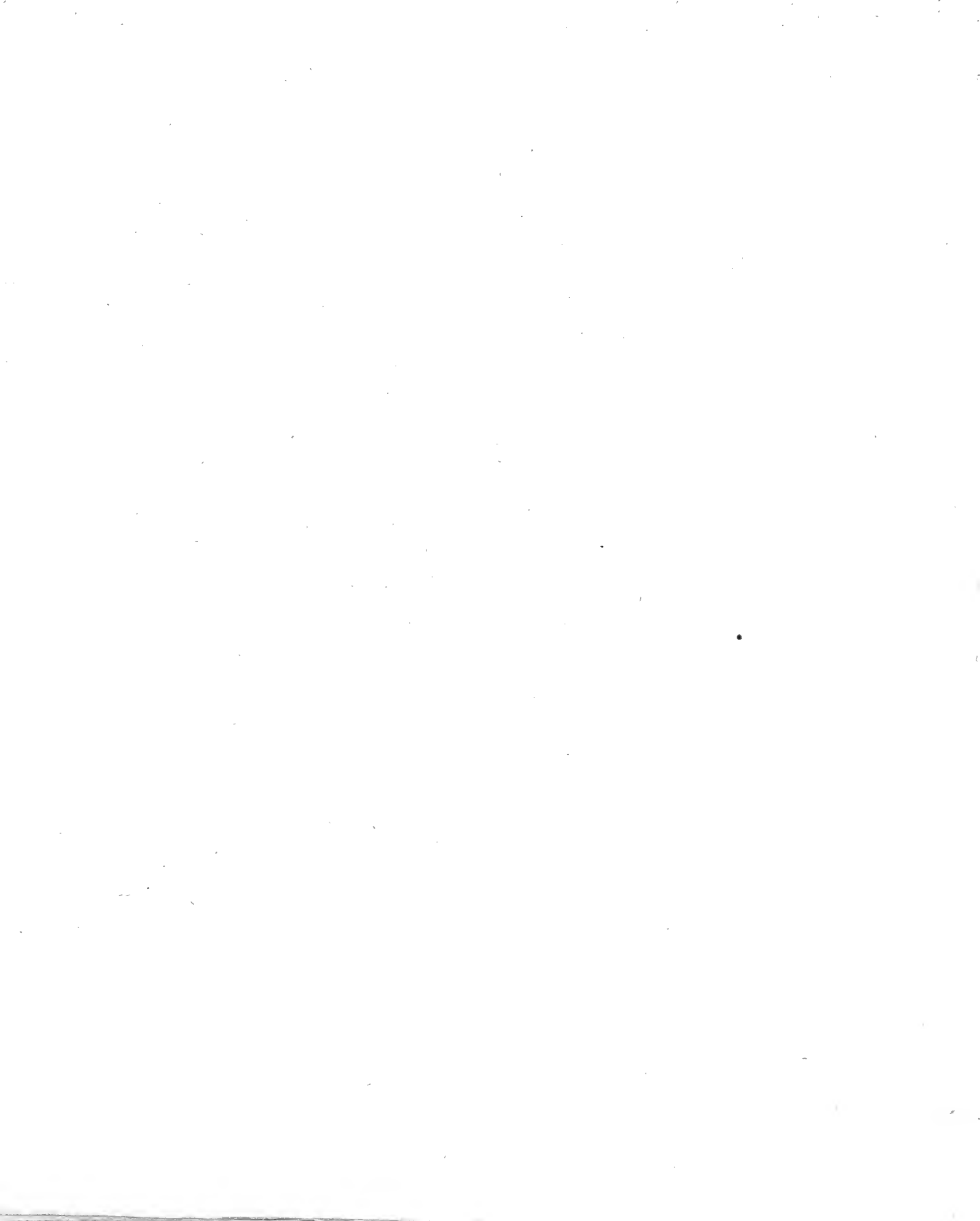
BY

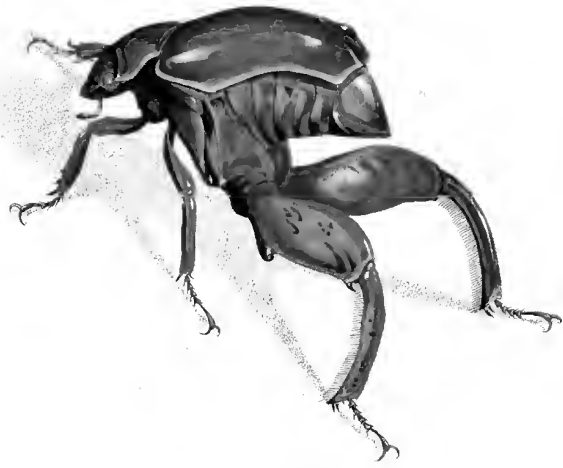
JOHN FRANCILLON.

LONDON:

PRINTED BY C. WHITTINGHAM.

1795.





SCARABÆUS MACROPUS.

CHARACTER GENERICUS.

Antennæ clavatæ capitulo fissili.

Tibiæ anticæ sæpius dentatæ.

LIN. SYST. NAT. p. 541.

CHARACTER SPECIFICUS.

Scarabæus scutellatus viridis nitens, subtus cupreo-auratus, pectore porrecto,
femoribus posticis crassissimis.

INSECTUM hoc, formæ insolitæ, et eximiæ pulchritudinis,
nullus unquam descripsit phycicus. Creditur porro non aliud
extare Specimen præter id quod depinximus, ab Ulyssipone in
Angliam illatum; quodque generasse aiunt Potosos in America
Australi. Ostendit tabula naturalem insecti magnitudinem.

THE KANGUROO BEETLE.

GENERIC CHARACTER.

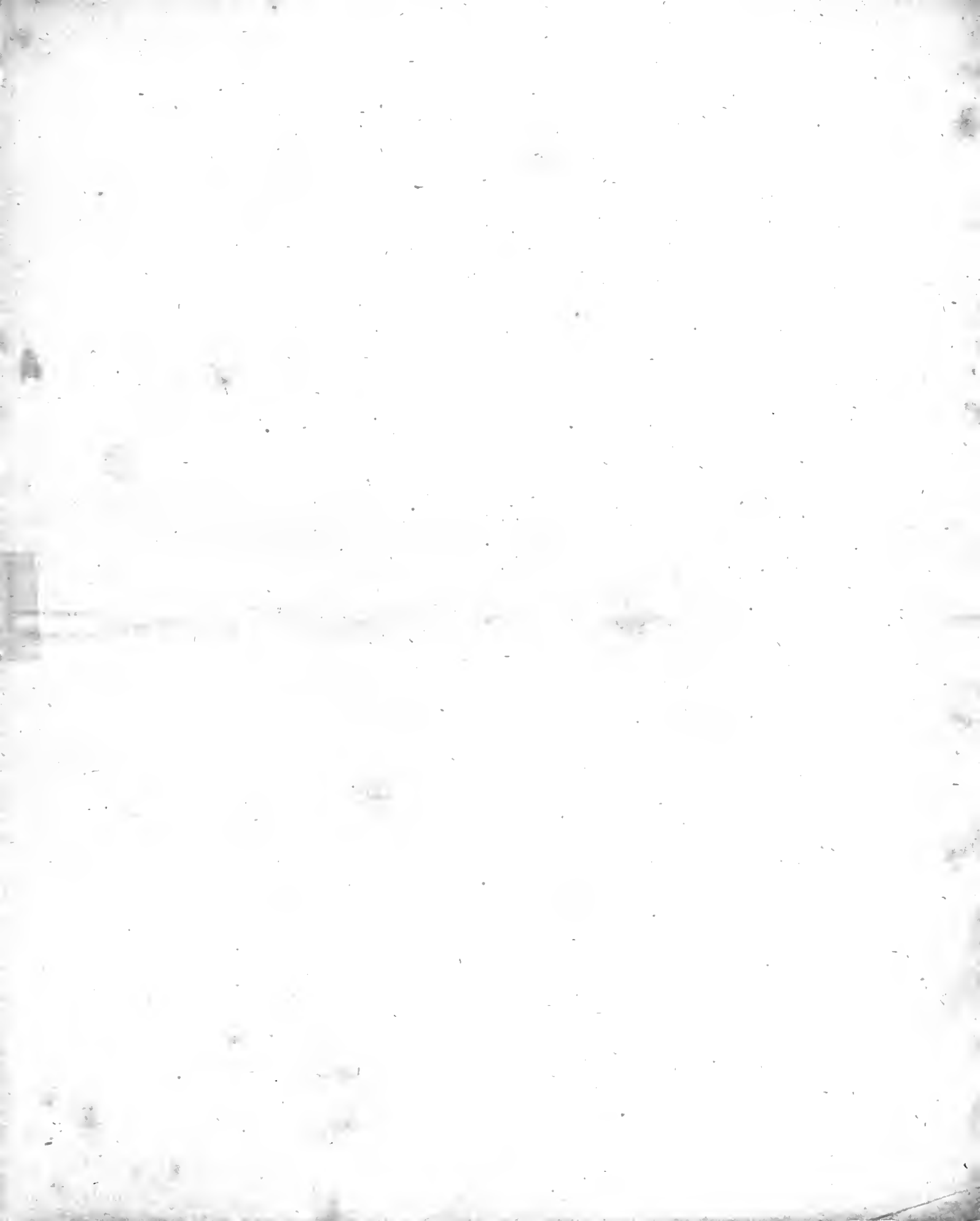
Antennæ divided at the tip or head into several lamellæ.

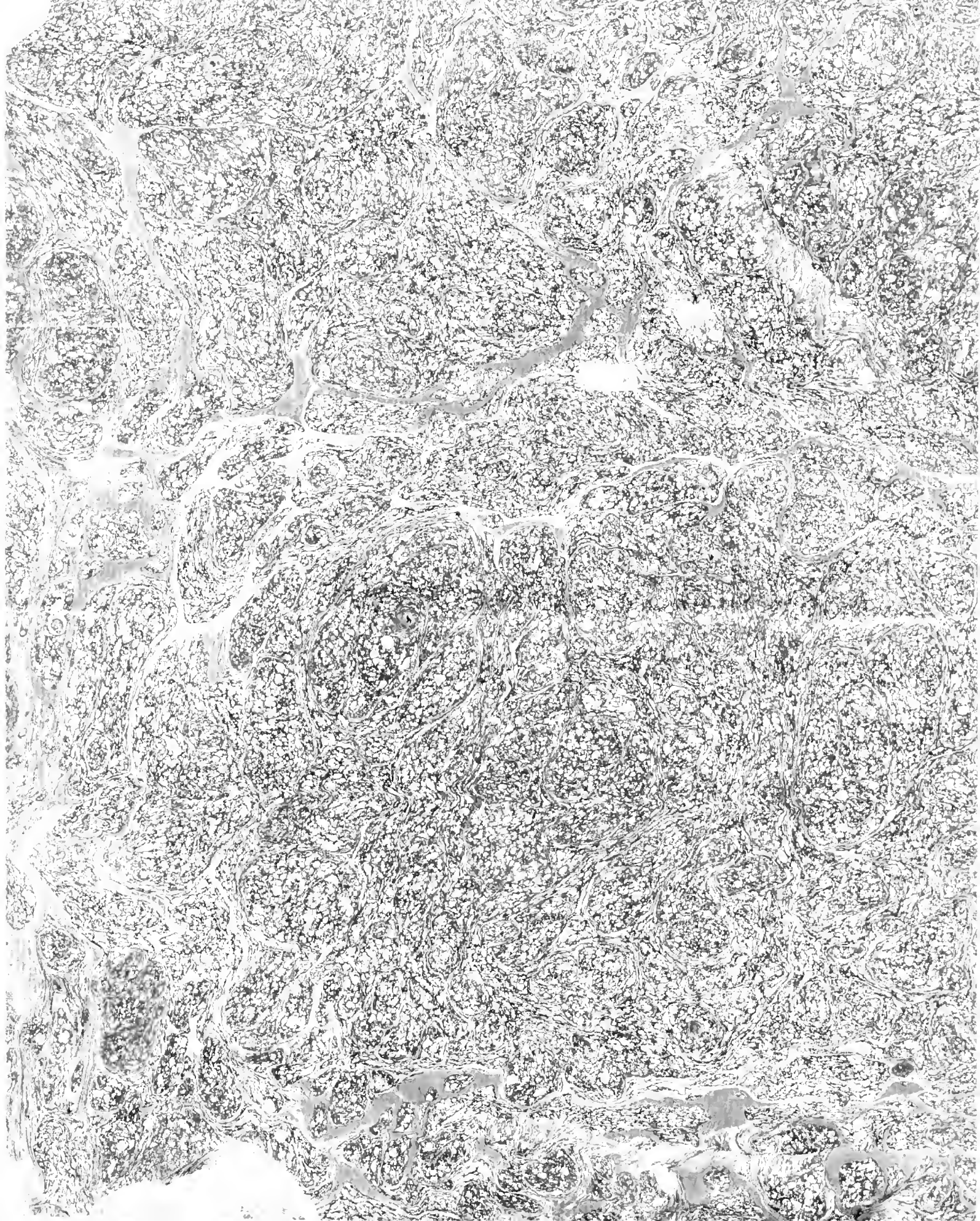
Tibiæ, or second joints of the fore-legs, generally toothed.

SPECIFIC CHARACTER.

Scutellated bright-green beetle, gold-coppery beneath; with projecting breast: the thighs of the hind-legs very thick.

THIS highly singular and beautiful insect, which has not as yet been described by any systematic Naturalist, and of which the Specimen itself is unique, was received from Lisbon; and is supposed to be a native of Potosi, in South America. It is represented in its natural size.





6011g

